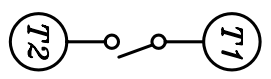
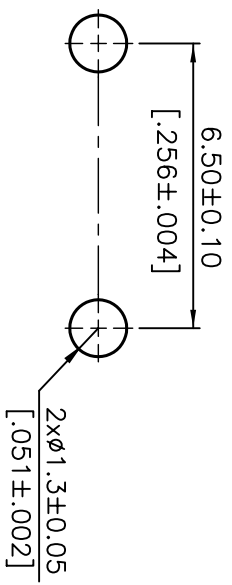
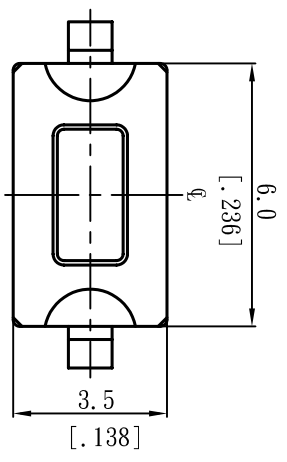


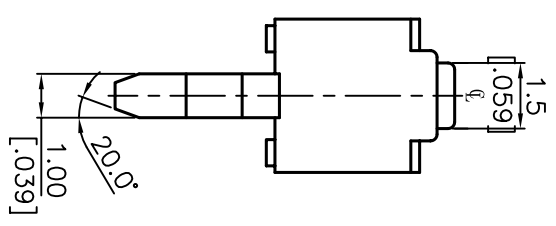
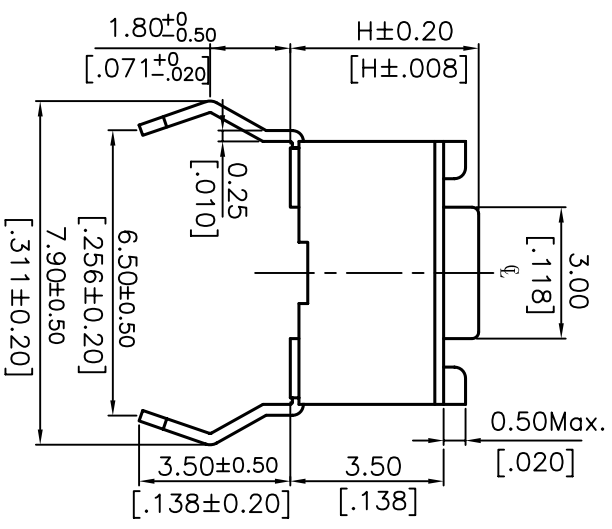
1 2 3 4 5 6 7 8 9 10

NOTE:
 1. ALL DIMENSIONS ARE IN MILLIMETERS, BRACKETED DIMENSIONS ARE IN INCHES.
 2. GENERAL TOLERANCES $\pm 0.20mm$.



P.C.B. LAYOUT

CIRCUIT DIAGRAM



DTS-32 □	5.0 [1.97]	Y	YELLOW 520g
		S	SALMON 320g
DTS-31 □	4.3 [1.69]	R	RED 260g
		N	BROWN 160g
PROD. NO.	H	Y	YELLOW 520g
		S	SALMON 320g
		R	RED 260g
		N	BROWN 160g
		COLOR FOR OPERATING FORCE	

△	D	增釘DTS-32R		
△	C	增釘DTS-32Y		
△	B	增釘DTS-32	05.12.99	楊豐富
△	A	DWG. REL.	11.28.98	楊豐富
ZONE	REV	DESCRIPTION	DATE	APPD.

APPD:	QTY:	SCALE:	8 : 1
CHKD:	UNITS:	mm	
DR:	REV:	D	
DESIGN:	PART NO.:	DTS-30 □	
	MAT'L:		
	FINISH:		
	PART NAME:	TACTILE SWITCH (3.5x6) (MECHANICAL CONTACT TYPE)	
	DWG NO.:	R D 5 P 3	

H G F E D C B A